

## Search lost partition - partition recovery

---

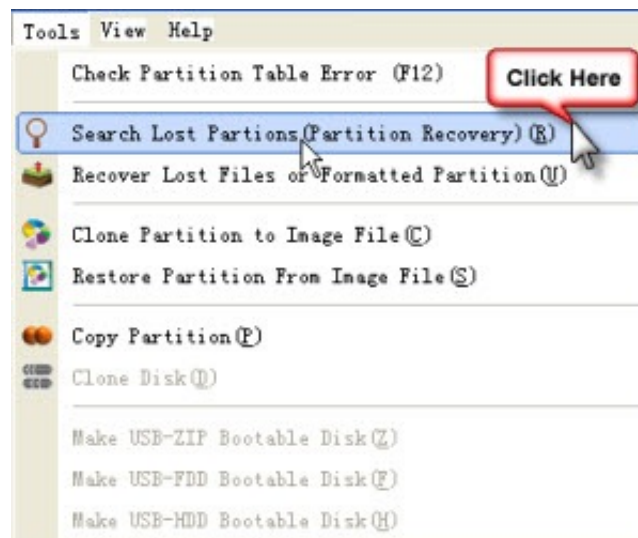
### Partition Recovery - search lost partitions

---recover lost partition and its files with Diskgenius

**DiskGenius is able to restore partition deleted or lost and recover its files.**

You can go to "Search lost partition - partition recovery" by;

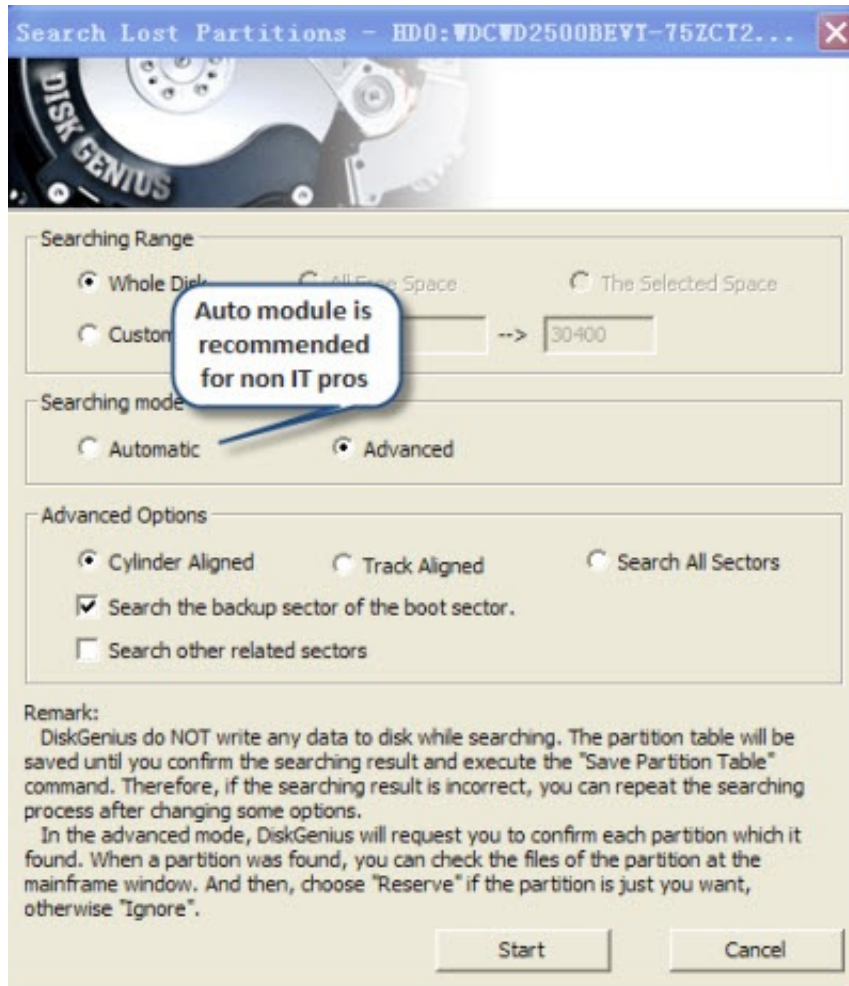
- Tools --> Search Lost Partitions



- Rebuild button



And after that, you will see the following box to restore partition



Tips:

### Searching Range:

1. **Whole Disk:** Ignore all existing partitions, search whole disk from beginning to end.
2. **All Free Space:** Keep the existing partitions, and search for lost partitions in each free space in turn.
3. **The Selected Space:** keep the existing partitions, and only recover deleted partitions in the free space currently selected.

### Searching Mode:

1. **Automatic mode:** Under this mode, whenever a partition is searched out and there are files in it, DiskGenius will always reserve it automatically. Then keep on searching for other spaces

till the end of the disk.

2. **Advanced mode:** Whenever a partition is searched out, DiskGenius will display all things about the lost partition and ask you whether this partition to be reserved. Before confirming, you can browse the files in it for judging whether the partition is the correct one. And under this advanced mode, you can set more advanced searching options. They are:

a) **Cylinder Aligned:** Only searching for the partitions which beginning at the first sector of cylinders. The searching speed is fast but may miss the partitions which not beginning at the first sector of a cylinder. Most partitions created by Windows XP and its previous version are cylinder aligned and then can be searched by this mode.

b) **Track Aligned:** Only searching for the partitions which beginning at the first sector of tracks. The searching range is bigger than cylinder aligned mode and the speed is slower. Still may miss the partitions created by Windows Vista and above.

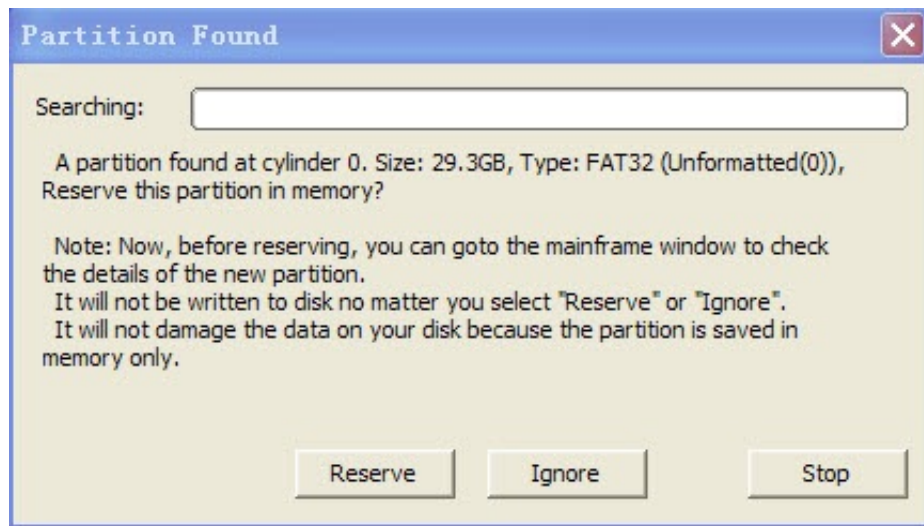
c) **Searching All Sectors:** Searching every sectors on the disk for finding out the lost partitions. The speed may be slow when there is no deleted partition be found on large space. But when a partition is found and reserved, the searching pointer will skip to the end of the partition to continually searching for the next partition. Generally in most cases the searching speed of this mode is acceptable. And it is worthy of trying this mode since it will not miss any partitions.

d) **Search the backup sector of the boot sector:** The NTFS and FAT32 file system both have backup sector of the boot record. If the main boot sector was destroyed, DiskGenius can search out the lost partitions by the backup one.

e) **Search other related sectors:** If the boot sector and it's backup were all destroyed, DiskGenius may try to find out the lost partition through other related sectors if this option is enabled.

When the searching option is set ok, click "start" button to start the partition recovery process.

If you selected the advance mode, then when one partition was found, DiskGenius would immediately show it on the interface. And the following information will be popup at the same time:



Now, if there are files in the partition just found, DiskGenius will automatically switch to the "Files" sheet and list the files in the deleted partition. At the same time the thumbnail panel will also expanded. You can go to the background windows to check the files in it without closing this message box. You can check the folder layout, preview image and text files, etc. If the partition is just you lost, please return to the message box and press "Reserve" button to keep the partition to memory. Otherwise please click "Ignore" to skip this partition. Note that "Reserve" not means saving to disk, it just saved in memory. So the whole searching process is safe.

Sometimes there is an option in the message box like: "This is a PRIMARY partition" or "This is a LOGICAL partition". If the partition type of "primary" or "logical" is incorrect (not same as its original type), you can switch it by check this checkbox.

The searching process will go on to recover other lost partitions till all the searching task finished.

If you selected the automatic mode, DiskGenius will automatically reserve every partitions which have files. And the partitions which have no files will be automatically ignored.

When the searching task completed, DiskGenius will popup the following message:



The searching result will NOT be automatically saved to disk. It still kept in memory. At this time, you can access the files in the partitions just found and even recover the lost files in it. The searching result will take effect by the operating system until you do the "Save All" or "Save partition table" command.

If you wan to give up the searched result, please click "Disk - Reload Current Hard Disk" menu. You can try an other search by setting some different options until your lost partitions are recovered.

[Download free trial](#) | [Buy now](#)